

Question and Answer Log – The MA

This document sets out the questions that have been submitted in relation to information sent to members about the proposed development of a new organisation, AMiE, by integrating the MA with AMET, the ATM, NAMA and NANAMIC through a formal merger process.

It will be updated regularly as new questions are received. You can submit a question anytime until the vote closes by completing [this form](#).

Please note that to keep the information ordered and easy to follow, some questions may be summarised or grouped together.

1. *Why has there not been more communication over the last year, and more notice given of the Q & A session?*

There has been a lot of work going on in the background, some of which has been commercially sensitive and/or confidential to specific associations. All five associations have put a considerable amount of time and effort in to get to where are now, and are committed to working together and ensuring that we maintain communication with members individually and collectively.

We apologise that members haven't been more updated and that the timelines are not ideal. We would prefer to have longer to work through things, but in line with our constitution if we didn't move forward at pace now to enable a vote at the AGM, we would likely have to wait another year. Members can continue to submit questions until the vote closes and we will regularly share updated Q & A logs with responses to all questions submitted.

With so much work having gone in, and the joining of the five associations having been talked about for several years, we are keen to get things done this year so that there is a clear way forward and members can start to experience the benefits of the new organisation, and contribute to how we build it going forward.

The information below gives more detail on the timeline that we are following in order to achieve this:

Our Voting Process Explained

Aim

Our aim is to create a new, shared association that will bring together and build upon the wealth of knowledge and experience in each of the five existing associations, to promote mathematics in education at all levels.

Our vision is clear, and all five associations have worked together to plan how we get there and ensure that members interests are central to our plans. To ensure we can do this, we are taking a staggered approach to the timing of each associations vote, so that members can be clear on what they are voting for and the options available.

Voting Process

1. The MA will be the first to complete their vote. This is because our new organisation would be formed using the existing legal entity of the MA, and by the MA formally changing its identity and governance arrangements allow AMiE to be formed with the other associations. MA members are therefore voting on whether they agree to change their identity and governance on completion of the merger, **and** whether they agree to merge with the other associations. This vote is subject to at least one other association voting in favour of merging.
2. If MA members vote to proceed, then the ATM will be next to complete their vote. This is because the ATM is larger and more complex than AMET, NAMA and NANAMIC, and so their involvement in AMiE will significantly affect how the new organisation looks and can be sustained. ATM members will be voting on whether they agree to merge into the new organisation.
3. Once the MA and ATM members have voted, we will have a much more certain idea of what the potential for the new organisation is. This means that when AMET, NAMA and NANAMIC members vote they can understand what the merger would mean for them as associations. The votes for AMET, NAMA and NANAMIC will therefore complete after the MA and ATM votes. Members of these associations will be voting on whether they agree to merge into the new organisation.

All votes are subject to appropriate due diligence. Although the votes are staggered, we are aiming to have the whole process completed by the end of May.

After the Votes

Once each association has completed its vote, they will share the outcome. Once all associations votes have been completed, we will share what this means for the creation of AMiE.

2. *Is the vote we are taking the final vote to merge, or just to continue the process of potentially merging?*

This is the final vote to complete the merger by changing the identify and governance of the MA to allow AMiE to be formed, and for the other associations to be able to merge into it. The wording of the vote has been set out to try and ensure that people are clear on the steps involved, and that if the merger doesn't go ahead then the proposed change of the MAs identity and constitution would not go ahead. There is further detail on this in the response to question 1.

3. *The use of the word professionals in the proposed vision for AMiE could be seen as restrictive and might put off those who don't see themselves as professionals such as students, retired people or volunteers. Is the vision final or could it be considered further?*

The brochure aims to set out a starting point from which we will refine and develop during the integration and implementation phase once the votes have taken place. Nothing is set in stone at this point.

4. *Part of the benefit of the new organisation is expected to be the stronger collective voice for our sector. But is there a risk that in some situations where all five associations are currently represented, such as the JMC, that having only one voice will be weaker or less influential rather than stronger?*

We hope that unity might help to present a clearer way forward, and in the case of the JMC we would negotiate with them about how this might work. The governance structure for AMiE has clear roles and committees to make it easier to report things up and down and ensure that individual areas of focus are represented and input into this unified voice. Strategic groups are particularly key in this as they offer opportunities for members and Trustees to come together to focus on specific areas of interest and priority.

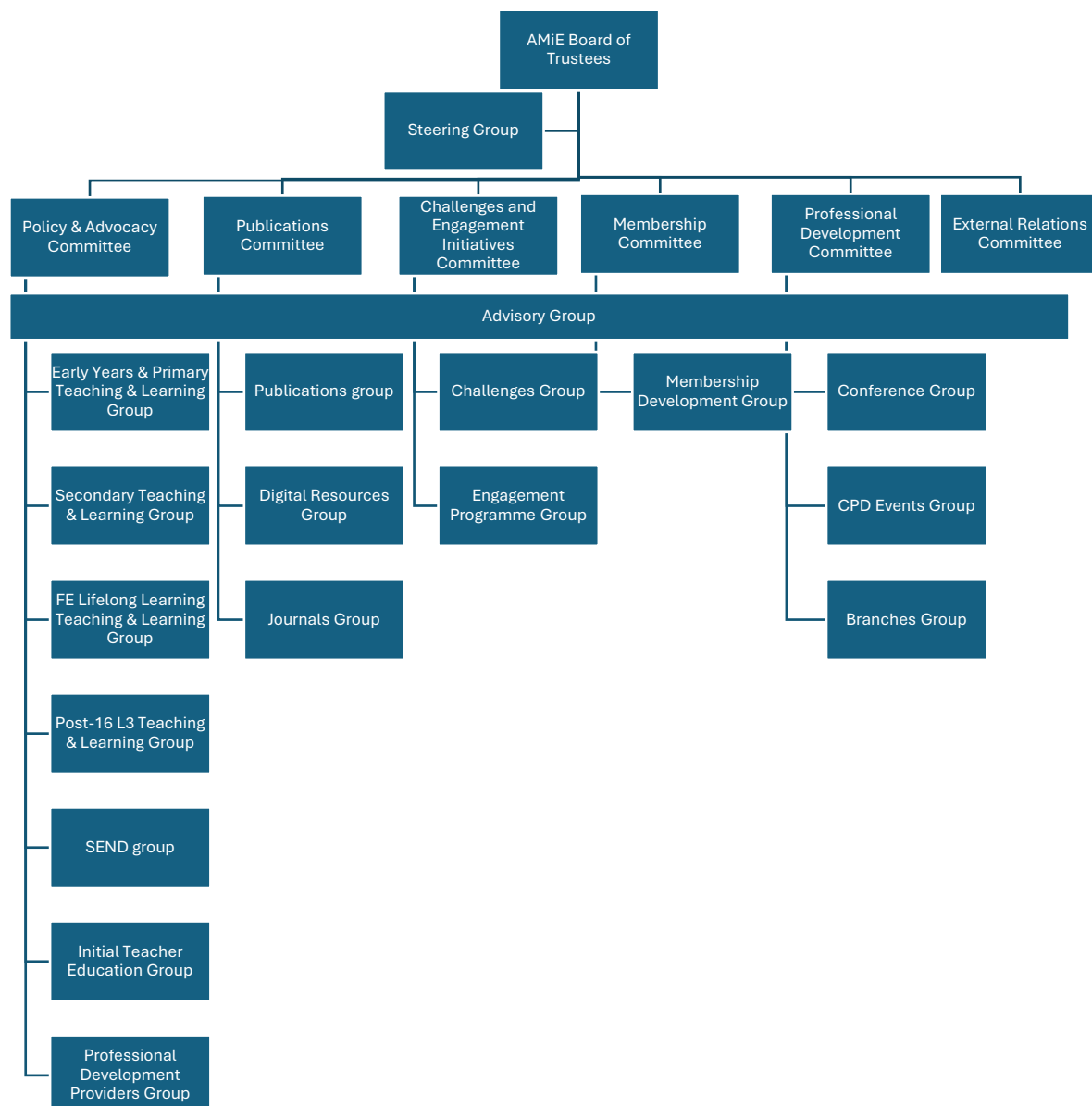
5. *There hasn't been a lot of communication to members in recent months about what is happening with the plans to integrate the associations. The brochure talks about having regular updates going forward, but this hasn't been the experience so far so what will change?*

As detailed in question 1, there has been a lot of work going on in the background. There are around 45 trustees and committee members across all five associations and making sure that we represent the needs and aims of each group has taken time, but the commitment from everyone involved has got us to this point. We have had to ensure that we respect the confidentiality, needs and governance requirements of each of the five associations at each stage of the work. At the same time, each association has continued to deliver their ongoing offer to members.

Once votes are complete, the shadow committee will form made up of representatives from each association, allowing much clearer lines of communication.

6. The vision, mission and values are quite wide in scope. How will we make sure that AMiE meets the needs of the different groups in the long term, so that we don't end up going full circle with people feeling their needs are not met and so setting up new associations with more specific areas of focus?

This has been considered and discussed a lot by all associations, to make sure that we can keep AMiE sustainable and meeting the ongoing needs across the sector in the long term. We recognise that that we need flexibility to adapt, add and evolve strategically to make sure AMiE stays responsive to changing and emerging needs for members and the sector. As such, the constitution will set out that the number and focus of strategic groups will be reviewed every year to ensure the organisation stays relevant to all members. The chart below sets out how this might look in the first year:



7. *When will there be more detailed information on how AMiE will operate in practice?*

This is a post vote process. All five associations have committed to maintaining their current offer for at least a year including journals, CPD sessions etc. These will continue while we work out as a combined group what we need and want to provide for members in the future.

8. *There is a commitment in the brochure to retaining the legacies of the five associations. How would this work in practice when they don't all do the same thing, and in some instances there might be a better way to do things?*

No, it doesn't mean that everything will be done exactly as it always has been but that we will build on the experiences and learning from each of the five associations to collectively decide how to do things for the benefit of all members going forward. We want to make sure that this wealth of experience and expertise is not lost and that the new organisation is not starting from scratch but instead integrating and building upon everything that the associations have achieved.

9. *What impact would the merger have on current journals?*

There is a commitment to maintaining the current offers of each association, including journals, for at least the first 12-18 months of AMiE to allow us time to evaluate and refine the membership offer to make sure that it meets what members want and need.

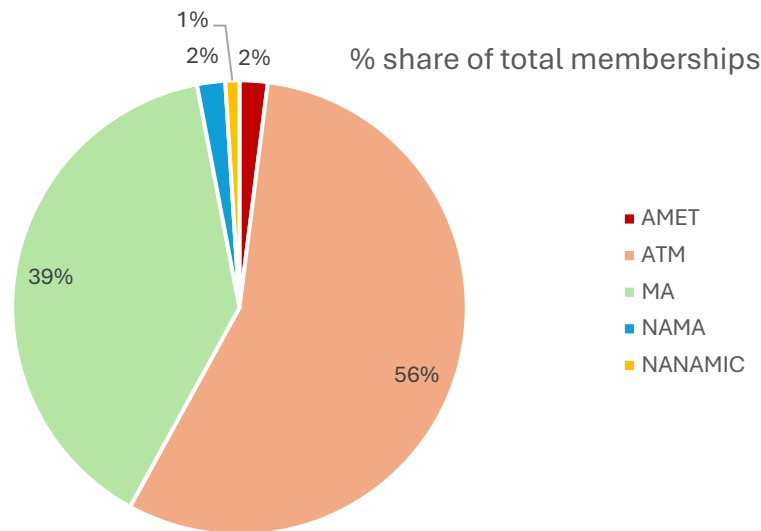
10. *How has the proposed membership cost been decided?*

We have analysed the income and liabilities that will be inherited by the new organisation. We have also calculated the number of unique members across all five associations, and the average total price that each unique member pays at the moment.

We have used these to model a basic membership price that is financially sustainable for the new organisation to cover its costs, and which is in keeping with the current average cost for each unique member. More information is set out below:

Membership Cost Modelling Overview

There are currently 3944 active memberships across all five associations:



Of these, 11% are held by people with membership of more than one association. In total, across all five associations there are 3553 unique members. The average total membership costs paid by each of these 3553 unique individuals is £53.91 as of March 2025.

We have explored the income/assets and liabilities that will be inherited by AMiE if the merger goes ahead which is summarised below:

Income excluding memberships:	
MA	£287,600.00
ATM	£109,755.00
Other associations	£29,000.00
Total	£426,355.00
Liabilities/Expenditure:	
MA	£370,000.00
ATM	£250,000.00
Other associations	£5,000.00
Total	£625,000.00
Variance	£198,645.00

This leaves a variance of £198,645 that the new organisation will require in membership income, in order to break even in year 1.

A membership level of £50-£60 would provide an income of £177,650 - £213,180 based on 3553 members, varying the existing average cost paid by -7 – +11%.

We have therefore proposed that the basic membership cost will be £50-£60, to be further defined by the more detailed work on the wider membership offer during the transitional process.